

Model 629 Rewind

Product Description/ Functionality:

The economical BESTE 629 Rewind winds up to 50" diameter rolls of paper with Web Widths up to 22" from continuous forms printers and other devices.

Product Advantages:

- Economical Design increases output and reduces operator interventions.
- Hydraulic Roll Lift included in the design of the rewind.
- Wide range of paper weights accepted.
- Programmable control speeds within ranges up to 400 feet per minute.
- Optional Mobility package includes Wheels, Quick Disconnect Power Cord, and Two (2) Step plate floor locks.
- Direct Interface Capability to printers.
- Standard, self-powered loop control rewinds paper at just the right speed for the host equipment.
- Optional Interlock Identifier System for quick error recognition.
- Provides tightly rewound rolls which may then be fed into inserters, folders, cutters, and other host devices.

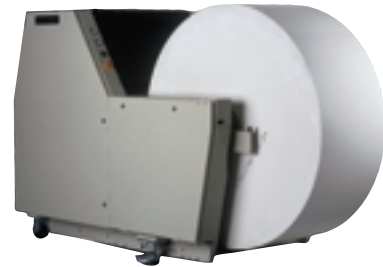


Model 629R Rewind

Product Specification:

<u>Dimensions</u>	<u>Weight</u>	<u>Electrical</u>
Height 53"	1100 lbs.	208/220/230 VAC
Length 70"*		Single Phase
Width 48"		

*Length loaded with a 50" dia. roll = 91"



**Rugged, Durable, and Dependable
Built for Speed**

Options:

- Type 1 Interface for Major Printer Vendors
- Air Shaft
- Interlock Identifier System
- Roll Dolly



- Mobility Package

**BESTE Bunch
A Division of
B. Bunch Co., Inc.**

9619 N. 21st Dr.
Phoenix, AZ
85021-1895

Telephone

602.997.6452

Fax

602.997.7266

**BESTE Bunch –
The Best in Roll Feed Equipment**

E-mail

sales@bestebunch.com

Website

www.bestebunch.com

All specifications subject to change without notice.

Manufacturers of Beste Bunch and B. Bunch equipment

B. Bunch Co., Inc.